



FIS MAGAZINE

Edition 12/2020

Our highlights:



xInvoice obligation: Are you ready for E-invoicing?

04



SAP S/4HANA transition: practical tips

05



Continuous supply chain processes with SAP TM

06



FIS Group implements SAP Commerce shop in the wholesale sector

07



Comment: How important is SaaS, PaaS, IaaS?

09



Secure Customizing, schemas & rules in SAP HCM

10



Solidarity despite Corona: we say thank you

11

Never again will digitization be as slow as it is today.

It is not only since Corona that digitization has played a leading role in economy and society. It is therefore particularly important for companies to implement digital projects in a well-considered yet timely manner. According to a recent Bitkom study, 58 percent of managing directors in all industries see their company as a latecomer in terms of digitization.

Be a pioneer and see these unpredictable times as an opportunity: Do not get left behind and continue to promote digital transformation.



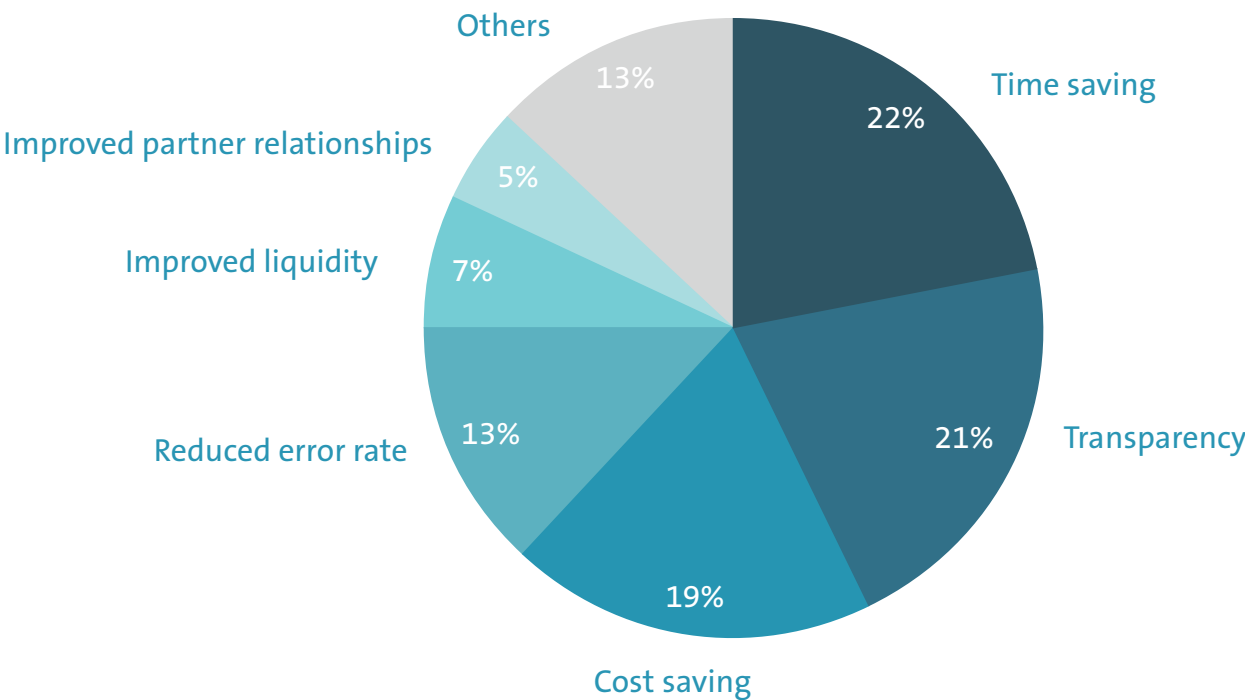
Ralf Bernhardt

Ralf Bernhardt, Managing Director

Faster and cheaper

ADVANTAGES OF E-INVOICING

The advantages of digital invoice processing are obvious: Invoices can be processed and paid faster and a large number of manual activities, such as the scanning or typing of data, are no longer necessary. Above all, the increasing transparency in invoice exchange is a decisive advantage: In invoice receipt, paper invoices, for instance, no longer gather dust on any desk during illness or vacation, but are digitally available in the system and can be taken over by a substitute. The relationship with vendors can also be improved as invoices are paid faster. Reducing paper also improves the CO2 balance and companies save postage for letters.



Source: "Paperless office and e-invoicing in Germany's top 700 companies", Fraunhofer IAO

xInvoice obligation

ARE YOU READY FOR E-INVOICING?

Since November 27, 2020, invoices for public contracts in Germany must be transmitted electronically. The standard format for data exchange is xInvoice. Thanks to the uniform format, public authorities can now automate their own B2G invoice processes.

xInvoice also soon B2B standard?

It can be assumed that the xInvoice standard is spreading rapidly and will soon be common practice in the B2B sector as well. Companies would do well to integrate the format into their business processes already today - not only because the legislative authority demands it, but also because electronic and automated invoice processing speeds up the processes considerably.

ERP adjustments required

In order to enable automated invoice processing, some ERP adjustments are necessary - legal requirements must be observed as well as the processing of country-specific XML formats in international invoice traffic. Various tools convert invoices from the ERP system via standardized import or export interfaces into the xInvoice format and vice versa.



The **FIS solution for xInvoice dispatch** enables an uncomplicated creation of xInvoices. The solution enables you to meet the legal requirements for invoicing without any development effort on your part.

Learn more about electronic document management:

fisly.de/sap-documents



Learn more:



fisly.de/s4-transition

Practical tips for the transition SAP S/4HANA TRANSITION

Postponed is not canceled: The maintenance extension for SAP ECC provides more time for the transition to SAP S/4HANA – but consulting capacities are scarce. How IT departments prepare themselves and which tools help.

Close reconciliation required

For the further development of their own business models, user department, IT and management board must be in close communication about new S/4HANA possibilities, but also about necessary adjustments.

Using SAP analysis tools

By using the SAP tools (e.g. SAP Readiness Check, Business Scenario Recommendation Report or Transformation Navigator), IT can independently perform important analyses prior to the transition project. The evaluations enable initial assessments on project duration or the appropriate transition scenario (greenfield or brownfield).

Cleaning up the ERP system

Business processes and document data, for instance, are checked against topicality using the Readiness Check. Unfinished transactions, such as unpaid invoices, must be closed and archived for instance. Only then can reliable statements be made about the architecture and size of the future system.



Continuous supply chain processes SAP TM FOR TRANSPORT LOGISTICS

The logistics market is more global than ever. This makes efficient supply chain management increasingly complex. Major challenges in transport management are, in particular, the increasing cost pressure and the frequently inefficient use of means of transport, such as hardly utilized truck capacities: only 50 percent are fully loaded. A good network of external dispatch and service providers as well as appropriate software provide for an optimized management of transport processes.

Reducing transport costs

SAP Transportation Management (SAP TM) is used for transportation planning and execution and supports users in optimizing the material and goods flow, which reduces transport costs in the long run. The software solution is consistently connected to relevant logistics processes and IT systems, such as SAP EWM for warehouse management or the ERP system. Due to real-time data, logistics managers can react faster to malfunctions or delivery delays and well-founded decisions based on uniform data can be made at any time.

Holistic supply chain execution

With more than 25 years of SAP expertise, the FIS logistics experts assist companies during the implementation of SAP TM and support them in transport logistics optimization. This means that FIS covers the essential parts of the SAP Supply Chain Execution portfolio - from warehouse to transportation management and the connection of all upstream and downstream processes. In this way, companies can achieve a consistent supply chain, from goods receipt and intralogistics up to goods issue and transportation management.



Curious? Read more:



fisly.de/tm-en



Omnichannel commerce in the wholesale sector

FIS GROUP IMPLEMENTS SAP COMMERCE SHOP

Dynamic markets present companies with the challenge of serving multiple sales channels. All channels must be networked with each other, also in the B2B area. In order to prepare itself for the future, Dachdecker-Einkauf Süd - a market-leading trading company for roof products - wanted to implement a Web shop and connect it with its stationary business. With its unique mix of technical SAP expertise as well as creative and conceptual know-how, DE Süd decided in favor of the FIS Group as its partner.

Omnichannel solution with B2B functions

Today, the customers of DE Süd can place orders in the brand-adequate online shop with numerous additional functions. The new shop platform based on SAP Commerce was seamlessly integrated into the SAP-based retailing system of DE Süd. This enabled the implementation of target group-specific functionalities and omnichannel scenarios for instance:

- Display of available products under consideration of individual prices
- Orders via search, from history, by scanning EAN codes at the construction site or based on quotations
- All orders, inquiries, quotations and invoices can be viewed in the shop

Learn more:



fisly.de/sap-cc-en

How SAP users are now strongly positioned

3 PILLARS FOR SUCCESSFUL E-COMMERCE

Today's customers are much more demanding and the expectations of the perfect shopping experience are high: it should be individual, personal and all-embracing. If trading companies today do not create a unique shopping experience, the next online shop is just a click away. To avoid customer churn, SAP users focus on three relevant e-commerce pillars: an omnichannel commerce strategy with integrated and personalized online shop, the development of online marketplaces as a distribution channel of a full-service strategy and automated master data management to use data as efficiently as possible.



Omnichannel & Personalization

- Comprehensive online shop incl. PIM and CMS system
- Integration of the SAP ERP system as well as the retail store
- Personalization through system integration and professional online marketing



Online marketplaces as sales channel

- Deep integration of the online marketplaces into the system landscape and the ERP system
- End-to-end process integration: from article selection up to payment and returns
- Central management of all connected online marketplaces



Efficient master data management

- High master data quality as the basis for online business
- Professional organization and automation of data creation and maintenance with the suitable software solution
- Machine learning additionally facilitates master data management



Comment to the SAP community

HOW IMPORTANT IS SAAS, PAAS, IAAS?

Opinions are divided about cloud computing: In Germany, there is a lot of reticence, but there are also intelligent and forward-looking cloud solutions. Ralf Bernhardt, Managing Director at FIS, about the importance of SaaS, PaaS and IaaS.

“ Using IT infrastructure as a service out of the cloud brings numerous advantages, such as scalability and innovative technologies. SAP is undergoing significant change and is promoting the development of SaaS solutions. With the cloud platform, SAP also provides a PaaS solution to extend the SAP standard version. With solutions developed in the cloud, individual bottlenecks and new requirements can be flexibly solved.

Our experience has shown that it is often advisable to run the ERP core functionalities in an on-premise solution - especially for large companies. In individual business areas, however, it makes sense to exploit the advantages of cloud solutions. With IaaS, the data center infrastructure can be expanded as needed. Our customers use this option, for instance, with the S/4HANA migration in order to benefit from an increased data center capacity for a short time.

Black-and-white thinking is therefore out of place when selecting the operating model. Our clear recommendation: First compare the solutions offered - regardless of cloud or on-premise - and then choose the one that fits your business and challenges. Hybrid IT landscapes are often the best solution as they combine the best of both worlds.



Billing und time management in SAP HCM

SECURELY POSITIONED FOR CUSTOMIZING, SCHEMAS & RULES

Safety and quality are the foundation of correct payroll and time management. But how safe is your HR system? Especially in the HR environment, legal requirements, company agreements or further developments require frequent changes in Customizing, but especially in personnel schemas and rules.

More security and control in the HR core functions

FIS/hrd SRA can be used to implement adjustments in SAP HCM quickly, reliably and safely at any time. FIS/hrd SRA facilitates the work in the personnel department and IT by providing versioning and documentation of reasons for changes. With this tool, the development becomes audit-proof and sources of error can be more easily identified or even completely avoided. Consequently, developments always remain traceable and controlled cooperation in development teams becomes possible.

Your benefits at a glance:



Versioning and history function



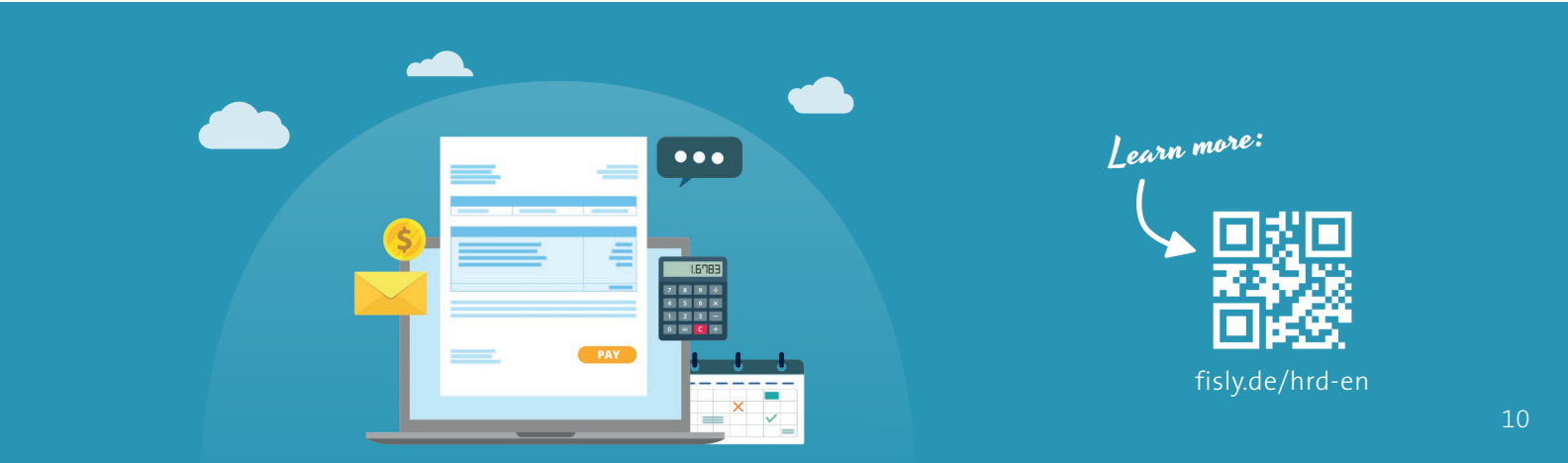
Improved efficiency and time saving



Audit-proof Customizing development



Increased data quality





Solidarity despite Corona WE SAY THANK YOU

The corona pandemic has turned everyone's daily life upside down. We at the FIS Group also had to master several challenges this year: from ERP projects that were implemented remotely and events that took place virtually at short notice up to job interviews that required new hygiene concepts. At the end of such an eventful year, there is only one thing left to say:

A big thank you to our customers for their trust and flexibility in the joint projects - this way, all planned go-lives could be carried out successfully.

Thank you to our employees for their solidarity in these unpredictable times. Numerous activities are intended to express our gratitude and at the same time benefit health:

- Fit to work: JobRad leasing and e-bike charging stations were introduced in spring.
- SummerParty@Home: instead of the annual family celebration, there were shopping vouchers and healthy barbecue recipes.
- Safe in daily life: regionally manufactured FIS masks serve as mouth and nose protection.
- Health day: lectures and exhibitions informed about skin care and the immune system.



+ 47

new hires



0 %

short-time work

Figures, data, facts THE FIS GROUP IN TIMES OF CORONA



+ 667 %

days in home office



- 611 tkm

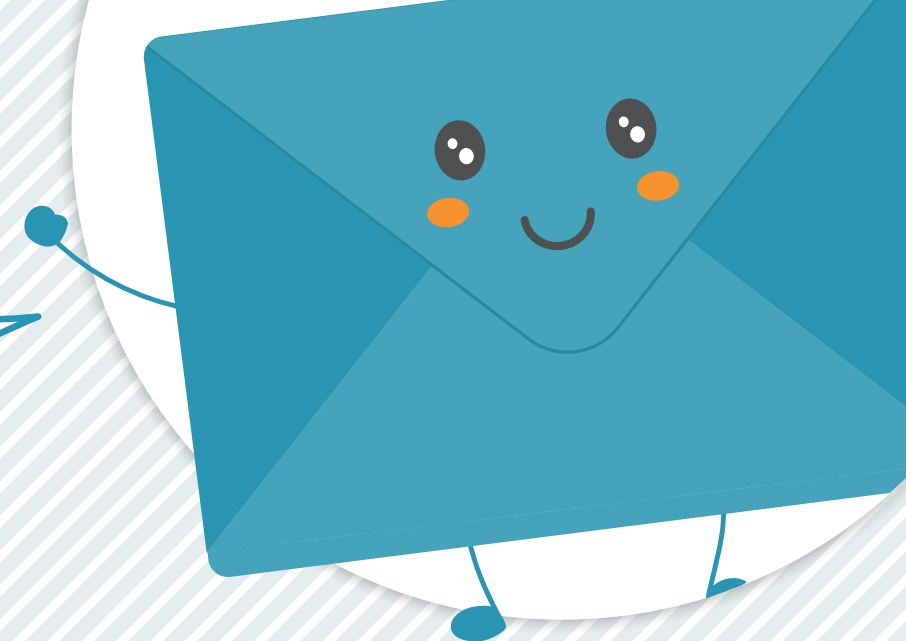
travel distance for appointments,
training and fairs

(all figures compared to the same period of the previous year, measured from February to August)



FIS – TAILORED SOLUTIONS FROM A SINGLE PROVIDER

- ERP implementation and transition (SAP ERP and SAP S/4HANA)
- Retailing for the technical wholesale
- Solutions for anything to do with warehouse logistics
- Master data and document management for SAP
- SAP solutions for the HR department
- Business partner integration and interfaces
- Certified support for FIS and SAP products
- Marketing, e-commerce, CRM and service
- Hosting and Managed Services
- Cloud platforms for transport logistics
- Nearshoring



[fis-gmbh.de/en/
newsletter](https://fis-gmbh.de/en/newsletter)

**STAY DIGITALLY UP-TO-DATE WITH OUR
ONLINE NEWSLETTER!**



Röthleiner Weg 1
D-97506 Grafenrheinfeld

Tel.: +49 97 23 / 91 88-0
Fax: +49 97 23 / 91 88-100

info@fis-gmbh.de
www.fis-gmbh.de





DEFINITELY THE APPROPRIATE SOLUTION.

www.fis-gmbh.de