

A person wearing a light blue t-shirt is holding a tablet computer. The background is a blurred warehouse or industrial setting with yellow overhead cranes and bright lighting.

Business Exchange Platform FIS/bxp

DIGITAL DATA AND DOCUMENT EXCHANGE IN WHOLESALE TRADE





Digital document and data exchange between business partners



Use of standard formats for document exchange



Communication between wholesale and craft in real time



Efficient workflows through mobile applications

Every day, wholesalers receive numerous documents from business partners, such as vendors, manufacturers and craftsmen. Usually, their data and document transfer is still not sufficiently standardized and digitized. It is therefore very complex to keep an overview, enter data correctly in the ERP system or automate processes.

As a central communication platform, the FIS/bxp Business Exchange Platform ensures the smooth document and data exchange between wholesale and craft. This is how you make your processes fit for tomorrow's retailing!

DATA EXCHANGE MADE EASY – STANDARDIZED, IN REAL TIME AND INTEGRATED IN SAP

FIS/bxp enables the **complete, technical integration of your business partners**. Business partner communication and document management are automated by using standard formats for electronic data exchange. Media

changes and high manual wholesale and craft efforts are now a thing of the past. The deep ERP integration into your system comes first for SAP expert FIS and ensures efficient **end-to-end processes**.

CENTRAL PLATFORM FOR OPEN DOCUMENT EXCHANGE (ODX)

The **ODX functions** of FIS/bxp (Open Document Exchange standard for the communication between wholesale and craft) are used to easily exchange documents and data between business partners in an automated way via a **central platform**.

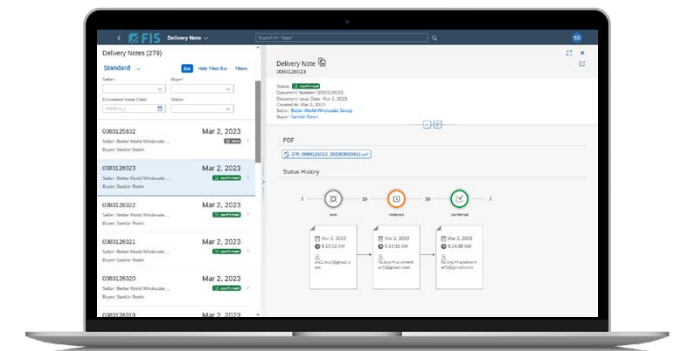
The **user-friendly launchpad** provides full transparency through the ODX functions and can be used as initial access to different applications.

The characteristic values of the wholesalers are maintained individually in the **wholesaler's app**. It is also possible to map the organizational units of the wholesaler's organization in the app.

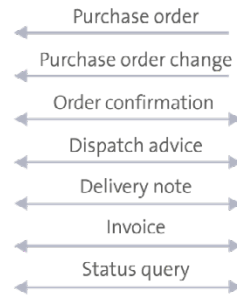
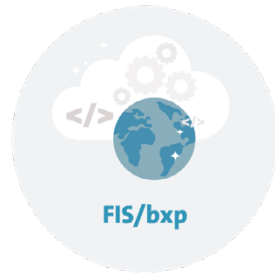
Business partner maintenance is used to define the craft companies involved in the application and to configure the corresponding authorizations. As a result, access is limited and the craftsmen are just provided with documents that are relevant for them.

ALWAYS AN EYE ON YOUR DOCUMENTS

The **FIS/bxp document monitors** offer a clear listing of your documents sent – for greater transparency and traceability.



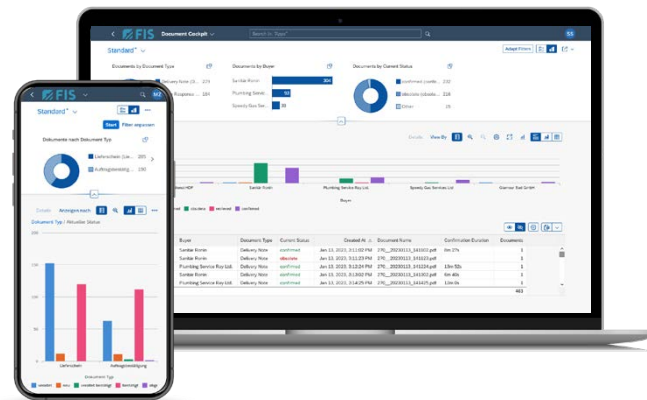
Overview of a delivery note



Digital data exchange with FIS/bxp*

The detail pages of the respective document contain information on the **status tracking** for the ODX transmission. This enables you to quickly see which user queried the document at what point in time.

wholesaler, such as the query of order statuses or the number of messages within a defined period of time.



The FIS/bxp dashboards enable you to always keep an eye on your document management.

FULL CONTROL DUE TO CLEAR DASHBOARDS

The clear FIS/bxp **dashboards** ensure full control over the data exchange and make your document management transparent at a glance.

By selecting different filters, such as time, craftsman, status and message type, the "Document cockpit" **analysis tool** enables individual evaluations of the message flow.

Another dashboard, the **API usage statistics**, shows the accesses of the craftsmen to the information of the

Start FIS/bxp now and make your document exchange with the craft sector fit for the future.

THE FIS-GROUP

FIS Informationssysteme und Consulting GmbH is an expanding, independent company and forms the umbrella of the FIS Group. Within this group, more than 800 employees work to make companies more modern, more economical and more competitive every day.

The focus of FIS is on SAP projects and the development of efficient solutions that drive digitalization in companies. As one of the leading SAP system houses in the D-A-CH region, FIS is the market leader in technical wholesale with its complete solution FIS/www.

Together with its subsidiary Medienwerft, FIS covers the complete SAP range of topics for the Customer Experience (CX) area.

**FIS INFORMATIONSSYSTEME
UND CONSULTING GMBH**



Röthleiner Weg 1
97506 Grafenrheinfeld
Tel.: +49 97 23 / 91 88 - 0

info@fis-gmbh.de
www.fis-gmbh.de/en

*already available: order confirmation, delivery note, status query