



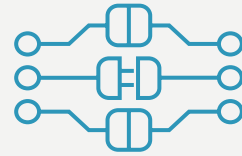
Well-founded decisions based on reliable company data

BUSINESS INTELLIGENCE AND ANALYTICS WITH FIS





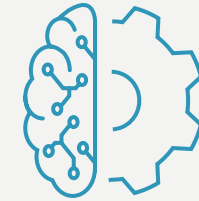
Cross-company and consistent decision-making processes



Integration of SAP and non-SAP systems



Intuitive visualization in dashboards and models



Inclusion of new technologies, such as Predictive Analytics and AI

Data obtained by companies during their day-to-day business needs to be summarized, commercially formatted and visualized. On this basis, well-founded decisions can be made throughout the entire company and completely new insights may be gained.

With SAP Analytics, companies and users manage and analyze decision-relevant data. The SAP Business Intelligence solution portfolio uses **state-of-the-art technologies** to support users in data analysis and decision-making in the best possible way. As a result, **valuable insights** are easily **gained** and **competitive advantages generated** from data available in the transactional systems.

SAP ANALYTICS CLOUD: INTUITIVE USER INTERFACE FOR CONSISTENT DECISION-MAKING PROCESSES

SAP Analytics Cloud (SAC) unites **Business Intelligence, Predictive Analytics** and **planning** in only one user interface. It is characterized by a particularly high **dashboarding** performance and **high user-friendliness**, e.g. due to self-service functions, mobile app or interactive

dashboards with touchscreen functions. The software-as-a-service solution can be integrated consistently with SAP or partially with non-SAP systems.

Due to its speed, **the high-performance HANA in-memory technology** forms the basis for using new technologies.

SAC: manifold application options

- Interactive dashboards
- Mobile & Social BI
- Predictive Analytics
- MS Office integration



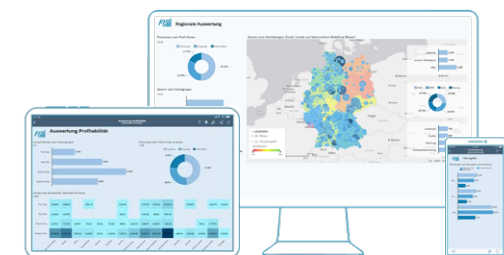
Users benefit from the possibility of analyzing large datasets that can be broken down automatically via **Smart Insights** according to the most important influencing factors.

In all user departments, forecasts and decisions can therefore always be made on the basis of an up-to-date and uniform data basis and can be **used** and presented **directly in the system**. If requested, the "Analysis Office for SAC" plug-in also supports the MS-Excel

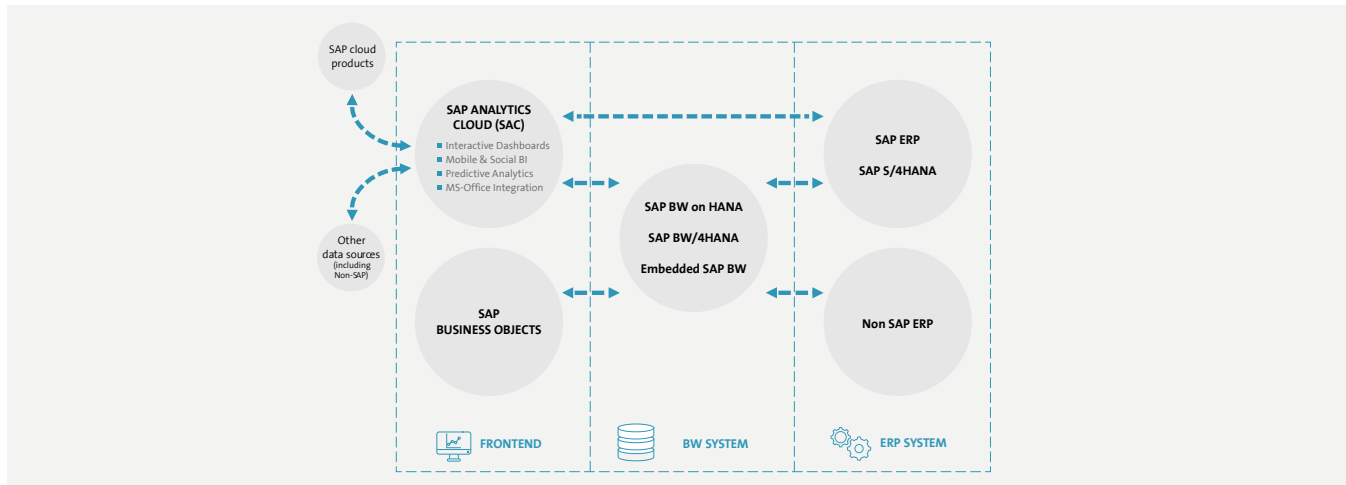
application. SAP Analytics Cloud paves the way to Social BI through advanced collaboration functions.

ALWAYS AN EYE ON CORPORATE KEY FIGURES: SAP BUSINESS OBJECTS BI PLATFORM

As a comprehensive on-premise product suite, the SAP BusinessObjects BI platform offers numerous applications for your **BI requirements** and **individual visualizations**. The data saved and formatted in this platform, which is, for instance, a front-end system for a BW or also S/4HANA system, can be further formatted and easily be made usable for reporting, dashboarding or predefined analyses by means of **different tools**.



SAC offers modern user interfaces on all terminals.



SAFE DATA RETENTION AND HIGHEST PERFORMANCE: SAP BUSINESS WAREHOUSE

In Business Warehouse, datasets are collected, concatenated, homogenized and saved. It therefore forms the central basis for analyzing relevant business information from diverse sources. The strengths of **SAP BW on HANA** and its **SAP BW/4HANA** successor product lie in **strategic reporting**. The integration and harmonization of data **from diverse systems** (SAP and non-SAP systems) enable long-term analyses and complex calculations, such as ABC analyses.

SAP BW/4HANA provides extensive functions as well as highest performance based on the HANA in-memory technology and is particularly suitable for **comprehensive Business Warehousing requirements**.

Within SAP S/4HANA, **Embedded BW** offers different analysis options. It enables the access to a flexible reporting with SAP and, as an **integrated BW system**, also supports ETL processes (Extraction Transformation Load).

REFERENCES



THE FIS-GROUP

FIS Informationssysteme und Consulting GmbH is an expanding, independent company and forms the umbrella of the FIS Group. Within this group, more than 800 employees work to make companies more modern, more economical and more competitive every day.

The focus of FIS is on SAP projects and the development of efficient solutions that drive digitalization in companies. As one of the leading SAP system houses in the D-A-CH region, FIS is the market leader in technical wholesale with its complete solution *FIS/wws*.

Together with its subsidiary Medienwerft, FIS covers the complete SAP range of topics for the Customer Experience (CX) area.

**FIS INFORMATIONSSYSTEME
UND CONSULTING GMBH**



Röthleiner Weg 1
97506 Grafenrheinfeld
Tel.: +49 97 23 / 91 88 - 0

info@fis-gmbh.de
www.fis-gmbh.de/en