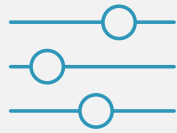




HIGH-PERFORMANCE BASIS FOR DIGITAL INNOVATIONS

SAP BUSINESS TECHNOLOGY PLATFORM





Flexible enhancement of SAP standard outside the core



Basis for scalable applications



Standardized look and feel through Fiori user interface



Availability without provision of individual hardware

In the networked world, companies have to connect their business areas digitally in order to stay competitive and keep up with the market. This requires the implementation of flexible and agile applications that are consistently integrated in the business processes and that support the digitization of these processes. This brings about company-wide and efficient end-to-end processes ensuring competitiveness and innovative power also in the future.

A high-performance technological basis is essential for the implementation of individual business applications and future-proof system enhancements. In its function as a platform-as-a-service offer, SAP Business Technology Platform (BTP) provides a high-performance and

secure basis for the initial development of new business applications as well as for the development of applications to enhance SAP Business Suite without changing the digital core. In addition, BTP offers numerous preconfigured tools, such as machine learning, for the implementation of new technologies, for instance.

DEVELOPMENT OF INNOVATIVE BUSINESS APPLICATIONS BASED ON BTP

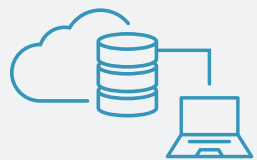
BTP is the high-performance innovation platform by SAP to develop individual business applications. The focus is always on agility and flexibility of the developments in

order to prepare companies and their business processes for the requirements of the digitized and networked world. BTP also enables the use of new technologies that are collectively referred to as SAP Leonardo. It is therefore the best basis for the implementation of digital innovations that are tailored individually to corporate needs and processes. The SAP Fiori user interface guarantees highest user-friendliness and, consequently, maximum user acceptance.

HIGH-PERFORMANCE INTEGRATION PLATFORM FOR INDIVIDUAL ENHANCEMENTS OF SAP BUSINESS SUITE

The existing SAP system landscape, i.e. cloud and on-premise solutions, can be enhanced by means of tailored applications based on BTP. The applications are seamlessly integrated into the system landscape and are used to adjust SAP Business Suite to the corporate business requirements without changing the digital core.

The HANA-in-memory database guarantees highest security and performance. As Enterprise Cloud platform, BTP provides preconfigured tools and toolsets, which facilitate the development of agile



NON-SAP SOLUTION +

SAP BTP



SAP CLOUD SOLUTION +

SAP BTP



SAP ON-PREMISES SOLUTION +

SAP BTP

and flexible applications as well as the integration of new technologies or Predictive Analytics.

APPLICATIONS BY FIS BASED ON SAP BUSINESS TECHNOLOGY PLATFORM

FIS/Berichtsheft and FIS/Ausbildungsplaner – Digital structuring of vocational training

The mobile applications make it easy to create and control evidence of formal qualifications and training planning. As a result, training companies save time and costs for training management and present themselves as a modern employer to digital natives.

FIS/TradeFlex –

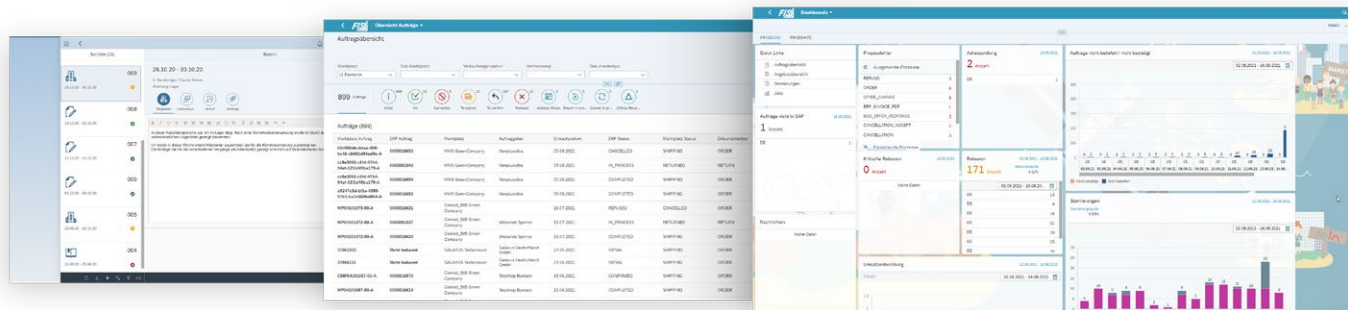
Connection of online marketplaces to SAP systems

Based on BTP, FIS/TradeFlex is the best option to seamlessly integrate online marketplaces into the SAP system. SAP Business Technology Platform Integration is used to con-

nect the API interfaces of B2C and B2B platforms without any development efforts. FIS/TradeFlex covers the entire sales process: from product placement, price and quantity determination, order creation in ERP as well as synchronization of fulfillment and billing to the payment process with automated assignment of billing documents. Reversals as well as back processing can be fully integrated in SAP where they are digitally and automatically processed.

Individual developments of business applications

The FIS experts create tailor-made business applications based on your individual needs. Innovative solutions are implemented on the basis of your business processes and digitization strategies. Benefit from tailored applications in various business areas and new technologies. Moreover, the experts implement individual and user-friendly solutions for the enhancement of your existing SAP landscape.



Based on BTP, FIS/Berichtsheft and FIS/TradeFlex convince with user-friendly user interfaces and smart functions

THE FIS-GROUP

FIS Informationssysteme und Consulting GmbH is an expanding, independent company and forms the umbrella of the FIS Group. Within this group, more than 800 employees work to make companies more modern, more economical and more competitive every day.

The focus of FIS is on SAP projects and the development of efficient solutions that drive digitalization in companies. As one of the leading SAP system houses in the D-A-CH region, FIS is the market leader in technical wholesale with its complete solution FIS/www.

Together with its subsidiary Medienwerft, FIS covers the complete SAP range of topics for the Customer Experience (CX) area.

**FIS INFORMATIONSSYSTEME
UND CONSULTING GMBH**



Röthleiner Weg 1
97506 Grafenrheinfeld
Tel.: +49 97 23 / 91 88 - 0

info@fis-gmbh.de
www.fis-gmbh.de/en