

A person is seen from behind, working on a laptop. The background is a soft-focus office environment. Overlaid on the scene are several white-outlined icons representing business processes: a document, a cloud with a refresh symbol, a document with a checklist and pencil, a group of people, and a line graph. Arrows connect these icons in a sequence, suggesting a workflow or process flow.

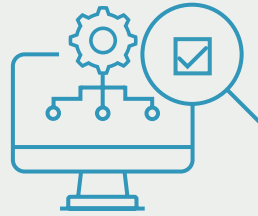
Analyzing and optimizing business processes

# **INTELLIGENT BUSINESS PROCESS MANAGEMENT WITH SAP SIGNAVIO**





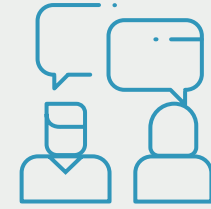
Fast gain in insights of current business processes



Detailed process analysis and optimization recommendations



Easy and intuitive process modeling



Company-wide collaboration options

**The world is constantly changing and the digital transformation is progressing. Companies need to adapt faster than ever before to complex requirements in order to evolve into sustainable and intelligent organizations. Here, high-performing business processes play a key role.**

SAP Signavio offers comprehensive options for business process management: from the initial analysis of the actual state of your business processes, detail analysis and derivation of optimization recommendations to the clear modeling of new processes.

The comprehensive software solution enables companies to understand their corporate procedures and processes, optimize them step by step and implement necessary changes. SAP Signavio helps you increase the efficiency of your business processes with modern technology, intuitive operability and the inclusion of all persons involved in the process. Different products are available for this purpose.

### INTELLIGENT BUSINESS PROCESS MANAGEMENT WITH SAP SIGNAVIO

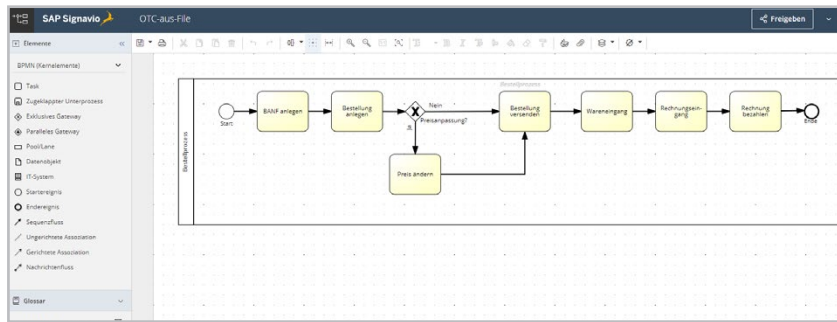
The data-based SAP Signavio business process management enables companies to reduce the time for gaining relevant insights (time to insight). Adaptations can be implemented very quickly (time to adapt). Companies particularly benefit from optimally structured processes when it comes to digital transformation projects, such as the ERP transition to SAP S/4HANA or the path towards cloud computing via RISE with SAP.

### SAP SIGNAVIO PROCESS INSIGHTS: GAINING OBJECTIVE INSIGHTS

When it comes to valuating the performance of processes, employees or decision-makers often rely on their gut feeling. However, an objective valuation is required for a correct analysis of the actual state.



Business Process Management with SAP Signavio and FIS



SAP Signavio makes business processes traceable and transparent

SAP Signavio Process Insights uses predefined process flows, key process performance indicators and innovation recommendations to provide you with a quick and full overview of the efficiency of your current corporate processes.

### SAP SIGNAVIO PROCESS INTELLIGENCE: "CROSS-EXAMINE" YOUR PROCESSES

If, for instance, anomalies are detected in a specific process during analysis, it can be analyzed more precisely using SAP Signavio Process Intelligence. The Process Mining tool enables the detailed analysis and visualization of data in order to get fact-based insights of your business processes and unveil improvement potentials.

SAP Signavio Process Intelligence enables employees, IT professionals and management members to better understand corporate processes and derive appropriate optimization measures. The clear visualization makes processes transparent and traceable.

### SAP SIGNAVIO PROCESS MANAGER: MODEL YOUR BUSINESS PROCESSES

SAP Signavio Process Manager can be used to easily document, model and simulate business processes. Beginners in particular benefit from the intuitive operability of the software solution and are enabled to analyze and model processes within the shortest period of time. Inefficiencies can be identified quickly and high-performing alternatives created. In addition, a shared process understanding is created within the company across departmental and division borders. SAP Signavio uses, for instance, BPMN standard (Business Process Model and Notation).

### SAP SIGNAVIO PROCESS COLLABORATION HUB: YOUR PROCESS KNOWLEDGE BASE

SAP Signavio Process Collaboration Hub is the central component for collaborative process management. As a knowledge base, the hub ensures the know-how of all involved and simplifies the organization-wide cooperation. Moreover, responsibilities, roles and process hierarchies quickly become apparent.

## THE FIS-GROUP

FIS Informationssysteme und Consulting GmbH is an expanding, independent company and forms the umbrella of the FIS Group. Within this group, more than 800 employees work to make companies more modern, more economical and more competitive every day.

The focus of FIS is on SAP projects and the development of efficient solutions that drive digitalization in companies. As one of the leading SAP system houses in the D-A-CH region, FIS is the market leader in technical wholesale with its complete solution FIS/www.

Together with its subsidiary Medienwerft, FIS covers the complete SAP range of topics for the Customer Experience (CX) area.

FIS INFORMATIONSSYSTEME  
UND CONSULTING GMBH



Röthleiner Weg 1  
97506 Grafenrheinfeld  
Tel.: +49 97 23 / 91 88 - 0

info@fis-gmbh.de  
www.fis-gmbh.de/en